

Long Lake Property Owners Association

TO PROTECT. TO ENHANCE. TO ENJOY.
WE ARE THE STEWARDS OF LONG LAKE



PROTECT

WATER QUALITY / MONITORING

Annual report is a summary of the data that has been collected through the hardworking volunteers of the Cooperative Lakes Monitoring Program for Long Lake.

ENHANCE

CONTROLLING INVASIVE SPECIES

You can help prevent the introduction of new invasive species into Long Lake and other local waterways by making sure you clean, drain, and dry all equipment.

ENJOY

LAKE FISHING & FUNDING

Anglers can expect to catch northern pike, largemouth and smallmouth bass, channel catfish, rock bass, bluegill, black crappie, yellow perch, and walleye.

PRESIDENT'S CORNER

Hello LLPOA Members (and members to be)

Welcome to another year at Long Lake!



Spring has come (and gone) early this year, but it seems like we're heading in the right direction with the weather. The association continues to serve you by working with the township and our lake management firm to ensure that we continue to proactively (and conservatively) manage the invasive species entering our lake. The challenge continues.

Lake Management and Weed Control

Restorative Lake Sciences continues to provide lake assessments, management, and treatments for 2025. Look for a first weed survey and treatment in early June, and a second assessment and treatment in late July or so to hit trouble spots of milfoil and nuisance natives.

While Eurasian Milfoil has been controlled for several years, we've seen a large increase in invasive Curly Leaf Pondweed and 2025 brought a new invasive species to Long Lake – Starry Stonewort. During a comprehensive lake survey by RLS last summer, a 9-acre area of Starry Stonewort was identified. This new-to-our-lake invasive is a macroalgae that forms a mat on the bottom of the lake, choking out other plant life. The initial area was mapped and treated, and we will be monitoring this problem for the foreseeable future.

Special Assessment for Weed Control – (SAD) – reduced for 2025

The \$89.64 "LONG LAKE" charge on your tax bill is a special assessment for weed control. It funds lake management by Restorative Lake Sciences, including treatments, permits, and related costs. The township handles the funds and pays all program expenses. This year's assessment is lower than last year's \$111, as decided by the township. The Long Lake Property Owners Association (LLPOA) aims to maintain a savings balance with the township for weed control to avoid borrowing funds. However, this reduction may lead to future budget shortfalls, and we are closely monitoring finances.

2024 Fish Stocking Program

The 2024 Fish stocking program was a success, with a November planting that included largemouth bass, walleye, hybrid bluegill and black crappie. Thanks to Fish Committee Chair Jay Peters for managing this process and investment in our lake diversity and sustainability. Your donation to the Fish Fund goes directly to these stocking programs.

Geese Control

Limits on relocation of geese due to avian flu concerns has limited our ability to deter geese from living on Long Lake. Nest destruction efforts were undertaken with limited success.

Last but certainly not least, thank you to fellow Board Members Chris Lyon, David Wirth, and Diane Carroll, our committee members, zone directors, and everyone else that step up during the year to make great things happen on Long Lake!

Michael Lesich
LLPOA President



**A reminder from your LLPOA Treasurer that it's
Time to Renew Your 2025-2026 LLPOA Membership
Today for only \$20!
Do it online at www.longlakemi.org**

Your \$20.00 Membership Fee goes a long way in supporting the Long Lake Property Owners Association (LLPOA) and the many initiatives that keep our lake community thriving. With your continued support, we are able to sponsor and organize events such as the Annual Boat Parade, the Long Lake Ice Jam, and provide New Member Welcome Packets. Your membership also covers essential services like:

- Participation in the Michigan Lakes and Streams Association
- Water quality monitoring through the MSU Cooperative Lake Management Program
- Liability insurance for the Association
- Goose Busters program
- Website maintenance
- Publication of this newsletter

In addition, your contributions help us advocate with Plainfield Township to preserve Long Lake as a valuable community resource. We also administer the Fish Fund, which relies on your generous donations.

How to Renew

Renewing your membership is easy! Choose one of these convenient options:

- **Mail:** Fill out the form at bit.ly/LLPOAMailInMembership and mail it along with your \$20.00 check to the address on the form. Please update your contact information!
- **Online:** www.longlakemi.org and pay via PayPal (please note a \$2.00 service fee applies).
- **In Person:** Attend an upcoming LLPOA meeting and renew on-site.

Don't forget your Donation to the Fish Fund! Your contribution goes directly to stocking the lake each year.

Your ongoing support makes all the difference. Renew your membership today and continue to be a part of everything that makes Long Lake a wonderful place to live and enjoy!

Welcome Committee

Join the welcome committee and meet new neighbors and help them get to know everything Long Lake has to offer. The welcome committee wants to reach out to new property owners on the lake and let them know about all of the great things happening in our area. Jennifer & Scott Henson are leading this effort along with others to put together a welcome packet with attractions, stores, local businesses and other resources that come in handy.

If you'd like to help out or know of a new property owner that we can reach out to please email Jennifer and Scott at jpatterson0759@gmail.com



2024 Lake Monitoring Update

The 2024 Cooperative Lakes Monitoring Program (CLMP) report for Long Lake, Iosco County (Site ID: 350076), summarizes water quality data collected by our lake CLMP volunteers. Key findings include:

- **Secchi Disk Transparency:** In 2024, water clarity averaged 13.8 feet (9 readings, range 12.0–16.0 feet), with a Carlson Trophic Status Index (TSI) of 39. Historical data (1974–2018) shows an average of 10.7 feet, indicating a long-term improvement in clarity.
- **Spring Phosphorus:** The 2024 sample was below 5 ppb (parts per billion), lower than the historical average of 11.8 ppb (1993–2018), suggesting reduced nutrient levels in spring.
- **Summer Phosphorus:** Measured at 9.0 ppb in 2024, slightly below the historical average of 9.9 ppb (1999–2018), but showing a stable or slightly increasing trend.
- **Chlorophyll-a:** No 2024 data was collected. Historical data (1998–2019) shows low levels (median 2.1 ppb in 2019), indicating minimal algae presence.
- **Dissolved Oxygen/Temperature:** No recent data available; enrollment in this parameter is recommended.
- **Aquatic Plants and Shoreline:** No data available for aquatic plant surveys or "Score the Shore" shoreline assessments.

With an average TSI of 38 in 2024, Long Lake falls between oligotrophic (clear, low-nutrient) and mesotrophic (moderate nutrients) classifications. Long-term trends show slightly decreasing water clarity, chlorophyll-a, and spring phosphorus, suggesting a move toward lower nutrient levels, but summer phosphorus is stable or increasing. Continued monitoring is advised to confirm these trends. Data is accessible at [Micorps.net](https://micorps.net), and volunteers are encouraged to expand monitoring efforts.

Current and past CLMP reports can be found at https://longlakemi.org/recreation/water_quality.asp

Zone Directors

What does a Zone Director do?

- Helps identify new property owners on the lake.
- Introduces the LLPOA and gets a membership application to them.
- Keeps their neighbors up to date on LLPOA business.
- Relays any concerns owners have that can be addressed by the LLPOA.

We have a need in several areas for Zone Directors. Please reach out to a LLPOA Board member if you are interested in volunteering.

Volunteer! We need boat parade judges, organizers, all are welcome to assist – we will find you something to do!



2025 Michigan Lakes and Streams Association Conference

Laura and I recently attended the 64th Annual Michigan Lakes and Streams Association (MLSA) Conference in Muskegon. It's a conference of lakefront property owners, scientists, policymakers, and conservationists working to advocate for an advance the stewardship of Michigan's inland lakes and streams.

Key Highlights:

- **Keynote Address:** David Ullrich, former US EPA Great Lakes Region Deputy Administrator, delivered a keynote on environmental advocacy, emphasizing collaborative stewardship.
- **Sessions:** Over 20 breakout sessions covered topics such as nonpoint source pollution, shoreline zoning, hypoxia (oxygen depletion), swimmer's itch, climate impacts. A special session by Terra Vigilis Environmental Services Group highlighted wake boat wave impacts, advocating for greater setback distances.
- **Ongoing:** MLSA emphasized ongoing efforts to address wake boat regulations and septic codes, expressing disappointment over stalled 2024 legislation.

Key Takeaways:

- Collaboration across organizations is critical for effective lake and stream protection.
- Emerging issues like harmful algal blooms, climate change, and wake boat impacts require innovative solutions and community engagement.
- MLSA's leadership, including Executive Director Melissa DeSimone's 2025 chairmanship of the Michigan Environmental Council, strengthens its advocacy for Michigan's waterways.

Swimmer's Itch: Swimmer's itch, caused by parasites hosted by birds such as ducks and geese, remains a persistent issue in many geographic regions. While keeping birds off personal property can offer minor benefits, it's largely ineffective since the parasite itself can travel widely, and accumulate in shallow, slow-moving areas where people prefer to swim, making avoidance difficult. Preventive measures like applying sunscreen and rinsing off immediately after swimming provide slight protection, but they don't eliminate the risk. Some regions experience even higher rates of swimmer's itch, and no definitive solution has been found to fully address the problem.

High Nutrient Levels Can Lead to Algae blooms

A particular topic of conversation was high nutrient loads in our inland lakes. From failing septic systems, excess vegetation, watershed runoff, and lawn fertilizer runoff, add to the growth of lake vegetation (native and non-native). Algae blooms of filamentous algae can be fed by warm weather and excess nutrients. While they are not harmful, other types of algae can present a risk to health. While we haven't seen them, HAB (Harmful Algal Blooms) have been reported on other lakes in the area. Our continuous monitoring of water quality helps keep us on top of this issue.

Wake Boats: In the Great Lakes, wake boats continue to spark debate due to their potential environmental and recreational impacts. Research on their effects is ongoing, but the issue remains unresolved, with no clear consensus or regulatory outcome.

More on these topics and others can be found at the conference website:

<https://mymlsa.org/mlsa-events/annual-conference-2025/>

CALENDAR OF EVENTS

<i>Date</i>	<i>Event</i>	<i>Time and Location</i>
<i>April/May</i>	Goose Busters – Nest Location ID	Various Locations
<i>May 24th</i>	LLPOA Membership Meeting	10 am Eagle Pointe Plaza
<i>July 5th</i>	LLPOA Membership Meeting	10 am Eagle Pointe Plaza
<i>July 5th</i>	Long Lake Boat Parade	1 pm – meet at Long Lake Bar 12:30
<i>July – TBD</i>	Long Lake Golf Outing	Wicker Hills Golf Course
<i>August 2nd</i>	LLPOA Membership Meeting	10 am Eagle Pointe Plaza
<i>August 30th</i>	LLPOA Membership Meeting	10 am Eagle Pointe Plaza
<i>September 6th</i>	Roadside Cleanup	Around lake and LLB at noon

Check your email and the Facebook group “Long Lake Property Owners” for updates and happenings around the lake.

Annual Road Cleanup - Saturday, September 6, 2025

Throughout the year, we promote the importance of maintaining cleanliness of our roads and around our lake. We urge everyone to play their part by removing any litter along the road that could, to protect others including our local wildlife and aquatic friends. Let's work together to preserve the beauty of our lake area and ensure it remains safe for everyone to enjoy.

Thank you to all our LLPOA members who helped clean up the roads around Long Lake in the past years and for those who attended our celebration Lunch at the Long Lake Bar last September.

LLPOA members can once again help with the end of summer clean up the weekend after Labor Day on Saturday, September 6, 2025. We follow up with a pizza meet-up at the Long Lake Bar at 12:00.

Contact Laura Lesich, Road Cleanup Chair, @ (586) 994-5104 for your preferred cleanup area. We like to assign the roads surrounding the lake in manageable segments and efficiently distribute volunteers so as not to duplicate efforts. A map will be available at the LLPOA meetings for sign-up. To sign up or if you have any questions, feel free to email Laura (lzlesich@gmail.com).

Long Lake Fish Committee Update 2025

Jay Peters, Chair

The fishing season is in full swing! There is every reason to believe this year will provide another great opportunity to spend some time wetting a line with family and friends.

Your Fish Fund Donations at Work in 2024, plus help from the DNR

The funds generously contributed to the LLPOA Fish Fund totaled roughly \$6,000 last year and made possible a diversified fish planting. The total cost was \$5,305 and the shipment arrived last November.

We planted the following quantities and species:

750 Largemouth Bass between 5 to 7 inches	300 Walleye between 5 and 8 inches
500 Black Crappie between 4 to 6 inches	250 Hybrid Bluegill between 4 and 6 inches

Along with the fish stocking supported by the Fish Fund, the Michigan DNR also stocks lakes statewide on a rotating schedule. On 6/23/22, they added 34,000 Walleye to Long Lake, followed by another 29,000 on 6/20/24. These fish are usually under 2 inches, and while it's hard to know how many grow to 20 inches, the DNR's efforts help maintain a healthy Walleye population.

Thank You for the Support of the Fish Fund

We're so grateful to those who regularly donate to the Fish Fund. When you renew your LLPOA membership, please consider adding a contribution. If you enjoy Long Lake's great fishing or simply appreciate a healthy, beautiful lake, your support makes a big difference! Every donation — whether \$10, \$20, \$50, \$100, or more — helps sustain our fish population and keep the lake vibrant for everyone. A special thank you to the sponsors of the Long Lake Golf Outing, whose generous contributions cover nearly half of our annual Fish Fund budget. Your support keeps our lake thriving!

Join the Fish Committee!

Want to play a role in keeping Long Lake's fish population healthy and balanced? There's a spot for you on the Fish Committee — no expert knowledge required, just a passion for the lake. Whether you're an experienced angler or simply care about maintaining Long Lake's beauty, your input is welcome.

Let's talk and see how you can get involved! Call me @ 1-616-822-0358 or email jay@developmentstrategies.com.

2025 Possession limits

Don't forget to purchase your license. The all-species license that covers all of the fish in Long Lake is \$26 and only \$11 for seniors 65 and older.

Species	Legal size	Season	Daily limit
Largemouth and Small mouth bass	Minimum 14"	May 24-December 31	5 in any combination
Walleye	Minimum 15"	April 26-March 15	5
Channel Catfish	No size limit	Open all year	No limit
Northern Pike	Minimum 24"	April 27-March 15	2
Blue Gill, Crappie, Sunfish, Perch	No size limit	Open all year	25 in any combination of listed species

For inspiration, here are a few of the State of Michigan records for species found in Long Lake.

Type	Weight	Length
Largemouth Bass	11.94 lbs	21"
Bluegill	2.75 lbs	10"
Channel Catfish	40 lbs	30"
Northern Pike	39 lbs	36"

Type	Weight	Length
Walleye	17.19 lbs	29"
Black Crappie	4.12 lbs	14"
Yellow Perch	3.75 lbs	14"

Safe Boating – it's both the law and common sense.

Download a convenient map of the lake at <https://longlakemi.org/resources/downloads.asp>

Please keep boating safety in mind at all times. When things get busy and people are fishing, tubing, skiing, sailing, pontoons, jet skis, paddle boards, kayaks, things get congested and hectic. Remember that we all have a right to enjoy the lake, but we must follow Michigan laws and show some common courtesy when sharing the water. Let's all do our part to keep the lake safe for everyone.

Some Key Reminders for Boating on Long Lake

- Travel ***counter-clockwise around the lake.***
 - Think of it as if you cut the lake down the middle, *you stay on the right side.*
 - Always keep the shore to your right closest to you.
 - This rule applies to personal watercraft as well as pontoons, ski boats and other motorized boats.
- Boater Safety Certificates are required for all those born after July 1, 1996.
- There are various age and boater safety certificate requirements to operate a PWC – check the law before allowing teens to operate a PWC
- Maintain ***a minimum of 100 feet*** from all other vessels, swimmers, docks, rafts, tubes, skiers or any other obstruction *unless traveling at a slow, no wake speed.*
- Give boats towing tubes and skiers plenty of space.
- Please share educational materials with new boaters and guests unfamiliar with the lake. It's a great refresher too. We have boater safety information at www.longlakemi.org and the Michigan DNR <https://www.michigan.gov/dnr/things-to-do/boating/rules-and-regs>

Love Our Loons, Give Them Room!



STAY AWAY from NESTS



STAY AWAY from PARENTS and YOUNG.

young Loons CANNOT dive or swim fast to avoid you.



STAY AWAY... he is warning you, NOT showing off.

You are too close to their nest.

Loons are threatened in Michigan and protected by state and federal laws. Wildlife harassment is illegal and subject to fines up to \$1,000 and/or 90 Days in Jail*

Be sure to retrieve all fishing line and tackle and use lead-free sinkers and jigs to reduce the risk of lead poisoning.

Please Report Abuse To The Michigan Department of Natural Resources Hot line

1-800-292-7800

Sponsored by

*Pursuant To Michigan Public Act 451 Of 1994

We Love our Loons! Give Them Room!

Avoid loon nesting areas (and the loons) at all times

Long Lake is fortunate to have one or two nesting pairs of loons each year. They get free run of the lake, and go where they wish.

Our job is to avoid their nests, and them. Please stay far away, do not approach, and steer clear if you do see them.

Long Lake Property Owners Association
4/30/2025

Treasurers Report
David Wirth

Account (Checking # 7936)		Balance Forward		\$ 1,040.08
Date	Account	Revenue	Disbursement	Running Bal
4/2/2025	Membership Dues	\$ 244.00		\$ 1,284.08
	Transfer to Fish Fund		\$ 64.00	\$ 1,220.08
	From PayPal	\$ 600.00		\$ 1,820.08
	Transfer to Fish Fund		\$ 280.00	\$ 1,540.08
	Transfer to Fish Fund		\$ 435.00	\$ 1,105.08
	M Lesich-MICInWtrCorps&longlakemi.org		\$ 175.85	\$ 929.23
4/14/2025	Membership Dues	\$ 903.00		\$ 1,832.23
	Transfer to Fish Fund		\$ 443.00	\$ 1,389.23
	Membership Dues	\$ 300.00		\$ 1,689.23
	Transfer to Fish Fund		\$ 280.00	\$ 1,409.23
4/18/2025	From PayPal	\$ 100.00		\$ 1,509.23
	Transfer to Fish Fund		\$ 20.00	\$ 1,489.23
4/29/2025	Membership Dues	\$ 362.00		\$ 1,851.23
	Transfer to Fish Fund		\$ 202.00	\$ 1,649.23
Totals		\$ 2,509.00	\$ 1,899.85	\$ 1,649.23

Savings (#4413)		Balance Forward		\$ 11,266.05
Date	Account	Revenue	Disbursement	Running Bal
	No Activity April 2025	\$ -	\$ -	
Totals	Totals	\$ -	\$ -	\$ 11,266.05

Fish Fund (Savings# 5027)		Balance Forward		\$ 1,836.58
Date	Account	Revenue	Disbursement	Running Bal
4/2/2025	Donations	\$ 84.00		\$ 1,920.58
	Xfer from Checking (PayPal)	\$ 435.00		\$ 2,355.58
	Xfer from Checking (PayPal)	\$ 280.00		\$ 2,635.58
4/14/2025	Donations	\$ 443.00		\$ 3,078.58
4/16/2025	Donations	\$ 280.00		\$ 3,358.58
4/18/2025	Xfer from Checking (PayPal)	\$ 20.00		\$ 3,378.58
4/29/2025	Donations	\$ 202.00		\$ 3,580.58
Totals		\$ 1,744.00	\$ -	\$ 3,580.58

Summary	Total		
Total General Checking	\$ 1,649.23	Long Lake SAD Balance	\$61,570.41
Total General Savings	\$ 11,266.05	(Funds managed by Plainfield Township)	
Total Fish Fund Account	\$ 3,580.58		
Total LLPOA Funds Available	\$ 16,495.86		



Long Lake Property Owners Association 2025-2026 Membership Form

Mail completed form with
check or money order to:
Long Lake Property Owners Association
PO Box 276 Long Lake, MI 48743

Renew Online: https://www.longlakemi.org/members/manual_renew.asp

<u>Primary Member</u>			
Name			
Email Address			
Cell Phone		Home Phone/Other	
<u>Spouse/Additional Party</u>			
Name			
Email Address			
Cell Phone		Home Phone/Other	
<u>Property and Mailing Addresses</u>			
Long Lake Address			
Mailing Address			

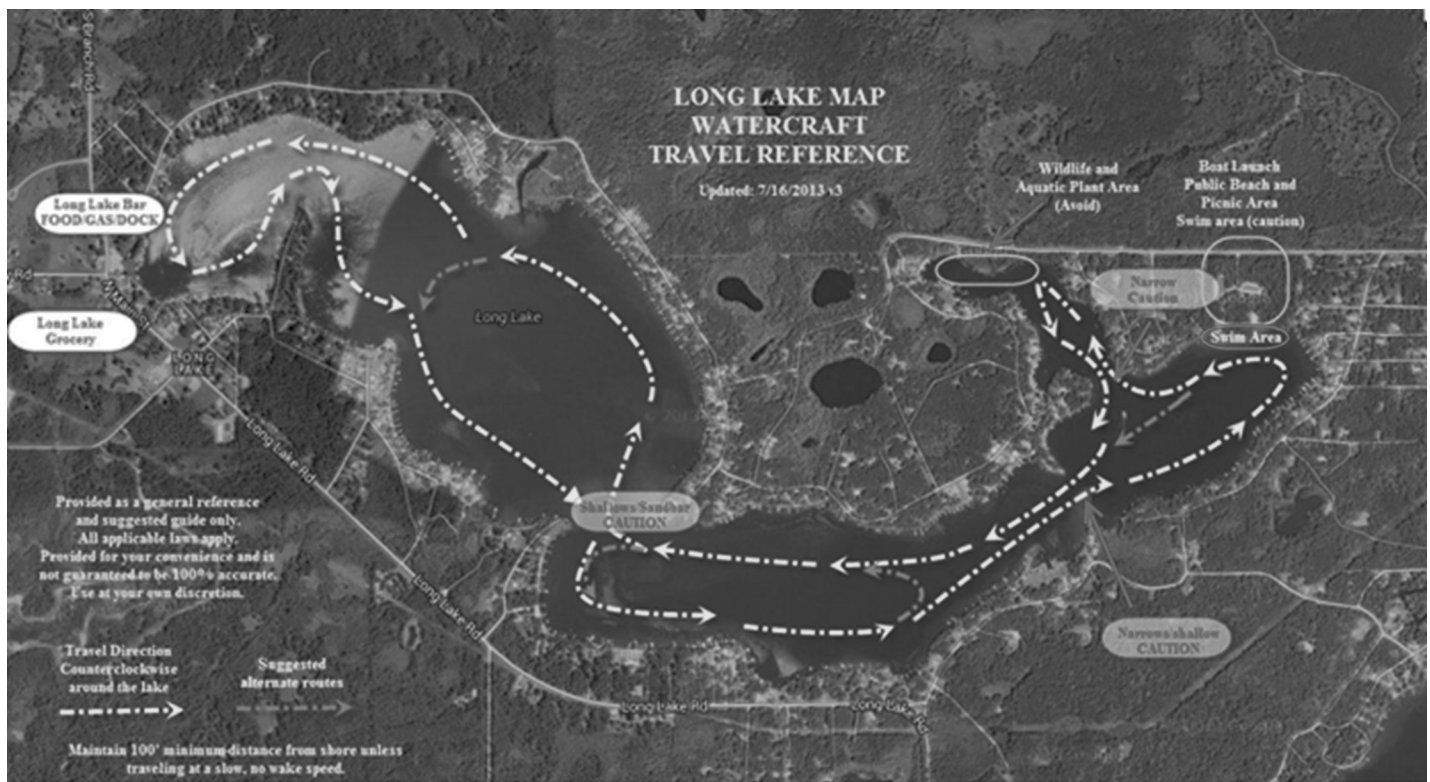
Dues (July 1, 2025 – June 30, 2026):	\$20.00
Fish Fund Donation:	
Total Enclosed:	

Interest	Now		Interest	Now
Board of Directors			Golf Outing Committee	
Lake Management Team (Water Quality, Weed Control)			Activities - Social Committee	
Welcome Committee			Youth Fishing Committee	
Fish Committee			Other Ideas	
Parade Committee				

CALENDAR OF EVENTS

<i>Date</i>	<i>Event</i>	<i>Time and Location</i>
<i>April/May</i>	Goose Busters – Nest Location ID	Various Locations
<i>May 24th</i>	LLPOA Membership Meeting	10 am Eagle Pointe Plaza
<i>July 5th</i>	LLPOA Membership Meeting	10 am Eagle Pointe Plaza
<i>July 5th</i>	Long Lake Boat Parade	1 pm – meet at Long Lake Bar 12:30
<i>July – TBD</i>	Long Lake Golf Outing	Wicker Hills Golf Course
<i>August 2nd</i>	LLPOA Membership Meeting	10 am Eagle Pointe Plaza
<i>August 30th</i>	LLPOA Membership Meeting	10 am Eagle Pointe Plaza
<i>September 6th</i>	Roadside Cleanup	Around lake and LLB at noon

Check your email and the Facebook group “Long Lake Property Owners” for updates and happenings around the lake.



Long Lake Property Owners Association
PO Box 276
Long Lake MI 48743

PRSRT. STD.
US POSTAGE
PAID
GRAND RAPIDS, MI
PERMIT NO. 657

Long Lake Property Owners Association Spring 2025 Newsletter

Welcoming new members!

Next Meeting May 24, 2025

10 am Eagle Pointe Plaza